

491750 492000 492250 492500

6364000

6364000



Moore Uranium Project
2018 Fall Drilling Update
Maverick Structural Corridor

Goose Zone
ML-204, 205, 206

ML18-08:
2.069% U3O8 over 3.5m

ML18-07

ML18-09:
1.014% eU3O8 over 6.3m
incl. 3.065% eU3O8 over 1.8m

ML18-14:
0.561% U3O8 over 15.2m
incl. 1.564% U3O8 over 5.0m
incl. 3.109% U3O8 over 1.8m

Maverick East Zone
ML-202, 210, 211, 212, ML17-11

ML18-15:
1.334% U3O8 over 7.8m
incl. 2.907% U3O8 over 1.5m

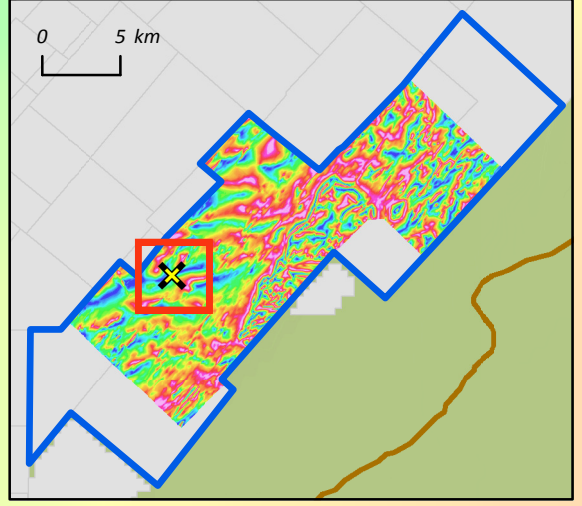
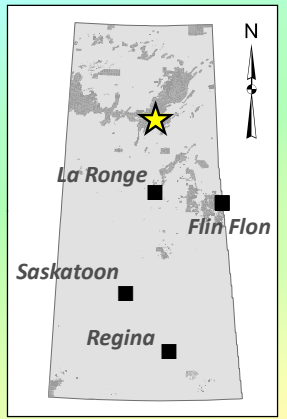
Maverick Zone
ML-199, 200, 201, 203, 208, 213
ML17-09, ML17-10

Maverick South
ML-207 Re-entered 2018

ML18-11

ML18-12

ML18-06



- 2018 Drill Hole - Mineralized
- 2018 Drill Hole
- Historic Drill Hole
- ⊗ Active or Depleted Uranium Mine
- ⊗ Mineral Deposit / Discovery
- ⊗ EM Conductors
- ⊗ River / Creek
- ⊗ Skyharbour Tenure
- ⊗ Other Mineral Tenure
- ⊗ Athabasca Basin Margin
- ⊗ Wetland
- ⊗ Lake
- ⊗ Mineralized Zone
- Magnetics - RMI
- High
- Low



6363750

6363750

6363500

6363500

491750 492000 492250 492500