

491900

492000

492100



SKYHARBOUR
RESOURCES LTD.

Moore Uranium Project
2018 Winter Drilling
Maverick and Maverick East Zones

ML18-09:
1.014% eU3O8 over 6.3m
incl. 3.065% eU3O8 over 1.8m

ML-202:
1.79% U3O8 over 11.5m
incl. 4.17% U3O8 over 4.5m
incl. 9.12% U3O8 over 1.4m

ML-210:
0.1% eU3O8 over 1.0m

ML-211:
0.127% U3O8 over 8.5m

ML-212:
0.193% U3O8 over 3.4m

ML-213:
0.757% U3O8 over 10.4m
incl. 1.56% U3O8 over 3.5m
Re-drill of ML-203

ML-199:
6.0% U3O8 over 5.9m
incl. 20.8% U3O8 over 1.5m

ML17-09:
1.41% U3O8 over 1.5m
(basement hosted)

ML-208:
2.25% U3O8 over 3.0m

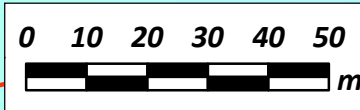
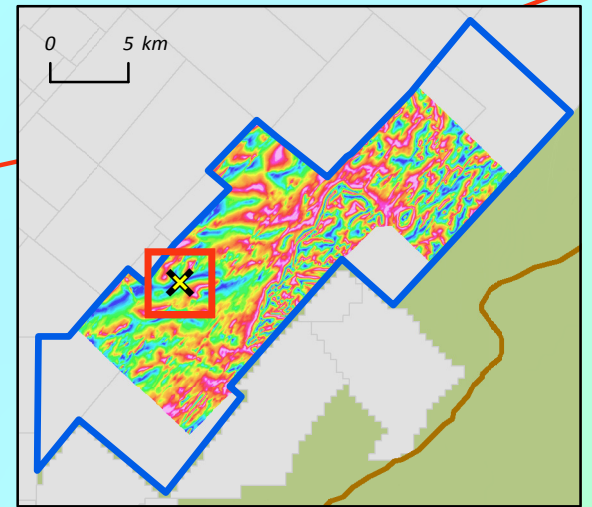
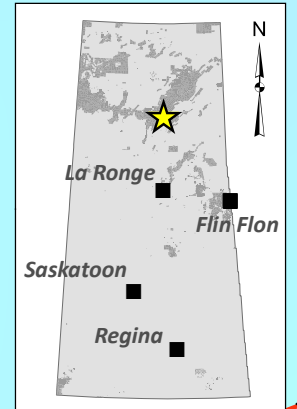
ML17-10:
2.23% U3O8 over 9.3m
incl. 7.4% U3O8 over 1.8m

ML18-07

ML-200:
1.62% U3O8 over 9.5m
incl. 2.99% U3O8 over 5.0m

ML18-08:
2.069% U3O8 over 3.5m

Historic Drill Hole ML-61:
4.03% eU3O8 over 10m



- 2018 Drill Hole - Mineralized
- 2018 Drill Hole - Unmineralized
- Historic Drill Hole
- Mineralized Zone
- Athabasca Basin Margin
- X Active or Depleted Uranium Mine
- X Mineral Deposit / Discovery
- ~ EM Conductors
- ~ River / Creek
- + Skyharbour Tenure
- + Other Mineral Tenure
- Magnetics - RMI
- High
- Low

491900

492000

492100

6363800

6363700

6363800

6363700