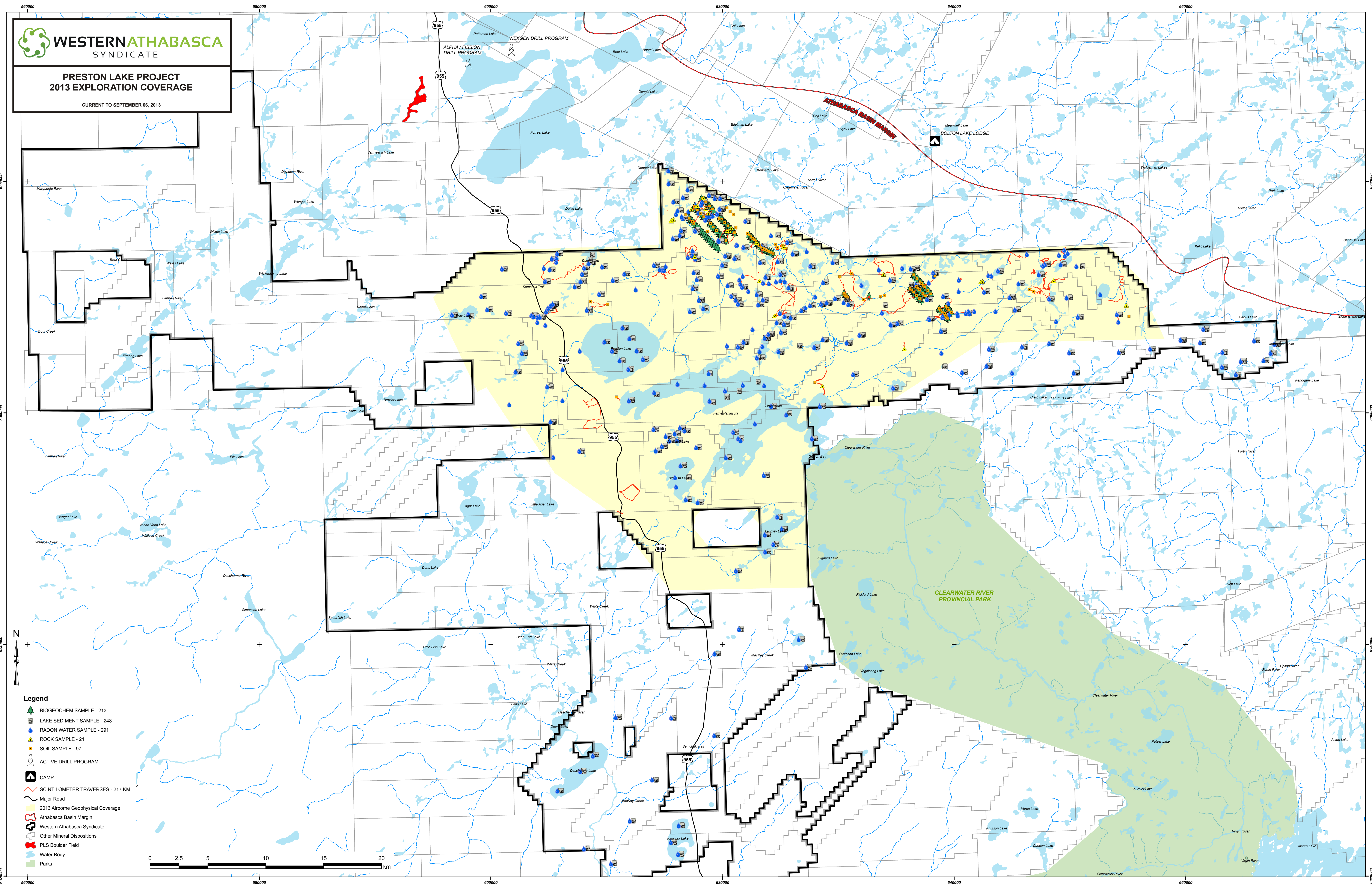


PRESTON LAKE PROJECT
2013 EXPLORATION COVERAGE

CURRENT TO SEPTEMBER 06, 2013



- Legend**
- BIOGEOCHEM SAMPLE - 213
 - LAKE SEDIMENT SAMPLE - 248
 - RADON WATER SAMPLE - 291
 - ROCK SAMPLE - 21
 - SOIL SAMPLE - 97
 - ACTIVE DRILL PROGRAM
 - CAMP
 - SCINTILOMETER TRAVERSES - 217 KM
 - Major Road
 - 2013 Airborne Geophysical Coverage
 - Athabasca Basin Margin
 - Western Athabasca Syndicate
 - Other Mineral Dispositions
 - PLS Boulder Field
 - Water Body
 - Parks

