

492000

492250

492500

6364000

6364000

6363750

6363750

6363500

6363500

492000

492250

492500



Moore Uranium Project
2018 Winter Drilling Update
Maverick Structural Corridor

Goose Zone
ML-204, 205, 206

ML18-09:
1.014% eU3O8 over 6.3m
incl. 3.065% eU3O8 over 1.8m

ML18-08:
2.069% U3O8 over 3.5m

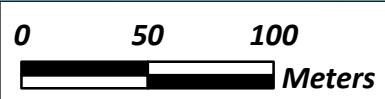
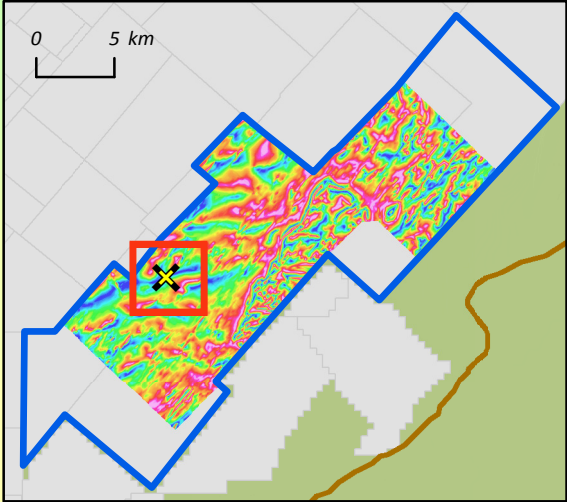
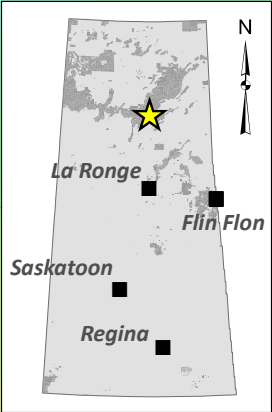
ML18-07

Maverick East Zone
ML-202, 210, 211, 212, ML17-11

Maverick Zone
ML-199, 200, 201, 203, 208, 213
ML17-09, ML17-10

Maverick South
ML-207

ML18-06



- | | | |
|-----------------------------------|--------------------------|--------------------|
| ● 2018 Drill Hole - Mineralized | 🌊 River / Creek | 🟡 Mineralized Zone |
| ● 2018 Drill Hole - Unmineralized | 🏠 Skyharbour Tenure | Magnetics - RMI |
| ● Historic Drill Hole | ⊕ Other Mineral Tenure | High |
| ⊗ Active or Depleted Uranium Mine | 🌋 Athabasca Basin Margin | Low |
| ✕ Mineral Deposit / Discovery | 🌿 Wetland | |
| 🔴 EM Conductors | 🌊 Lake | |