



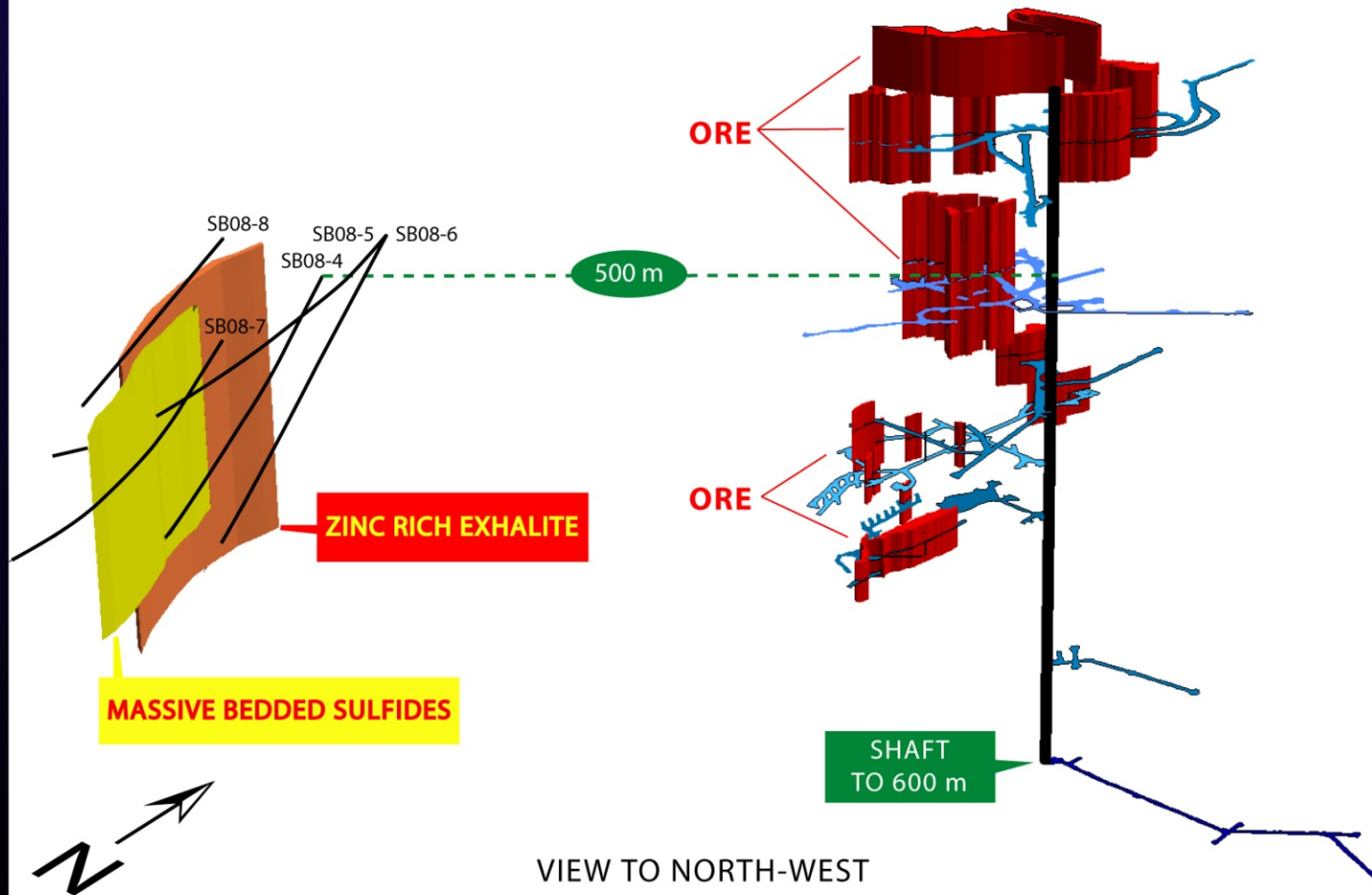
**Skyharbour**  
RESOURCES LTD.

# SOUTH BAY MINE PROJECT

NEW DISCOVERIES

# LOCATION

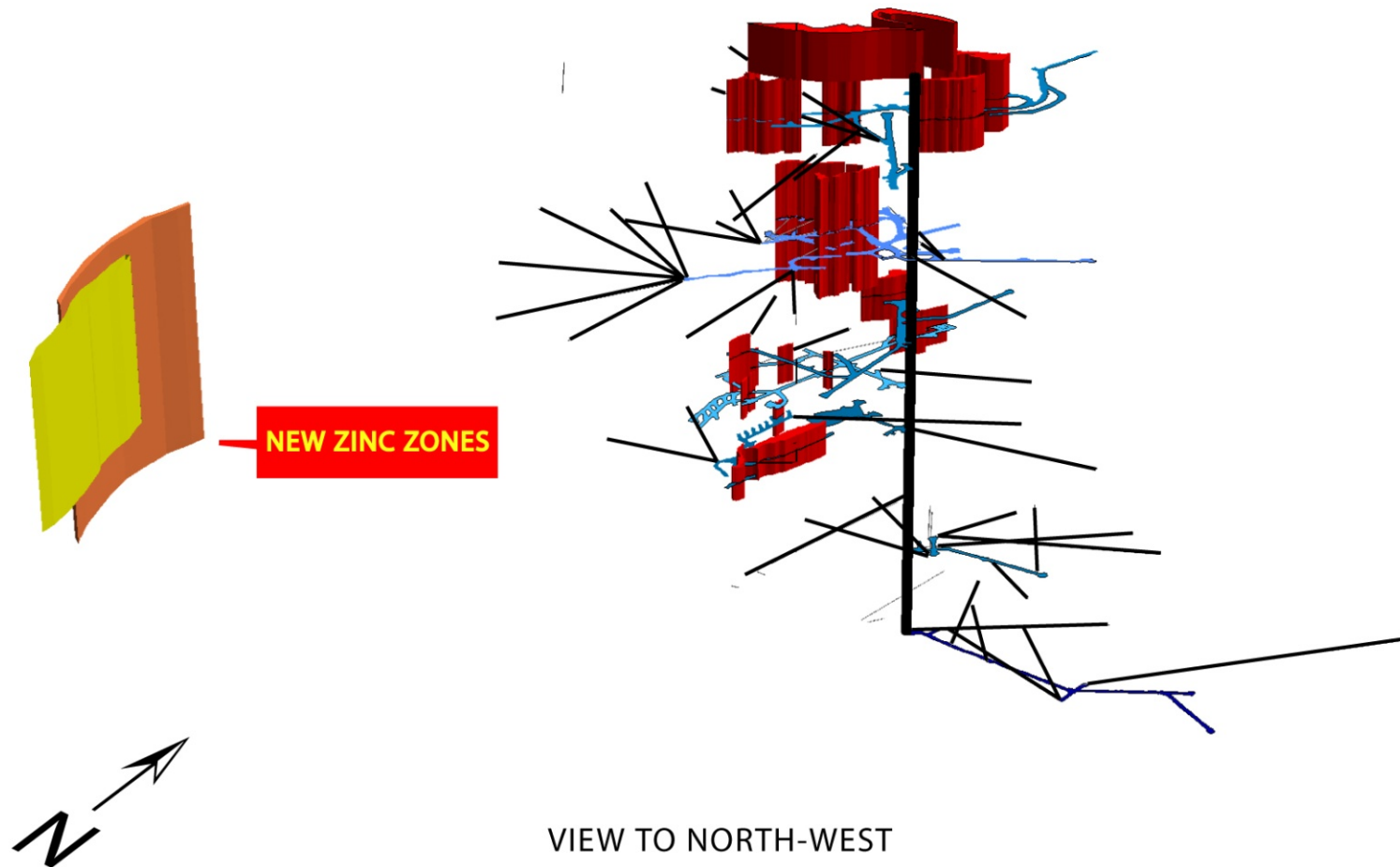
SOUTH BAY MINE, DEVELOPED TO A VERTICAL DEPTH OF 600 M. PRODUCED 1.6 MILLION TONS BETWEEN 1970 & 1982  
GRADING 2.3% Cu and 14.5% Zn  
(Development Levels in blue)



# DRILLING FROM UNDERGROUND

FIGURE SHOWS EXTENT OF UNDERGROUND DRILLING

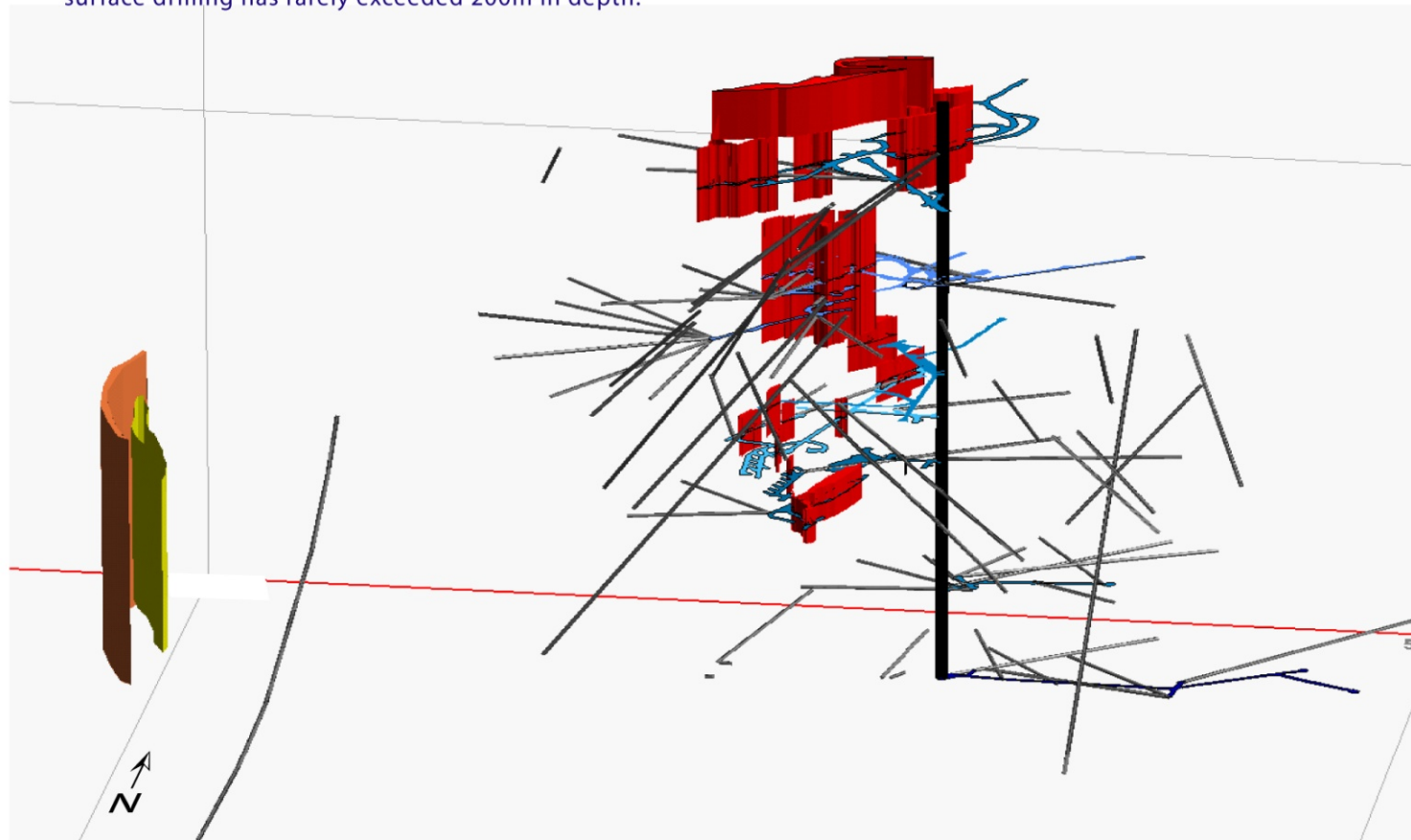
NOTE : NO PRODUCTION ACHIEVED FROM BOTTOM TWO LEVELS OF MINE.



# SURFACE & UNDERGROUND DRILLING BY MINE OPERATORS

EXPLORATION BY PREVIOUS OPERATORS CAN ONLY BE  
DESCRIBED AS "TIMID"

This type of deposit has been explored for and profitably  
developed to vertical depths of 1000m. Exploration in  
the mine has been only to a depth of 600m and most  
surface drilling has rarely exceeded 200m in depth.



VIEW TO NORTH

# DEVELOPMENT WITH TITAN-24 CHARGEABILITY ANOMALY

